

MONTHLY MEMBERSHIP PROGRESS REPORT

District 9 SE

Results as of: 6/30/2020

GMT:

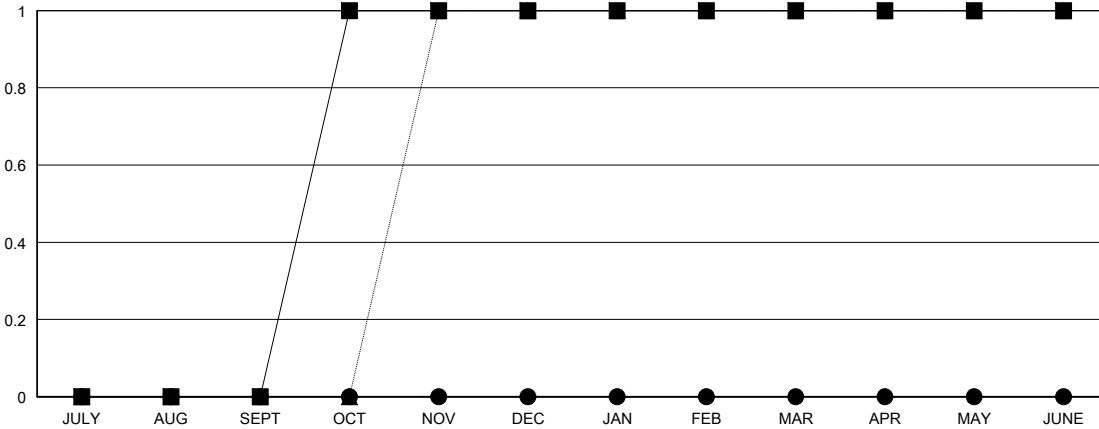
LOCATION IOWA

GMT CA

Clubs			
RESULTS FOR 2019-2020			
QUARTER	NEW CLUB GOAL	NEW CLUBS	DROPPED CLUBS
JULY/AUG/SEPT	0	0	0
OCT/NOV/DEC	1	0	0
JAN/FEB/MAR	0	0	0
APR/MAY/JUNE	0	0	0

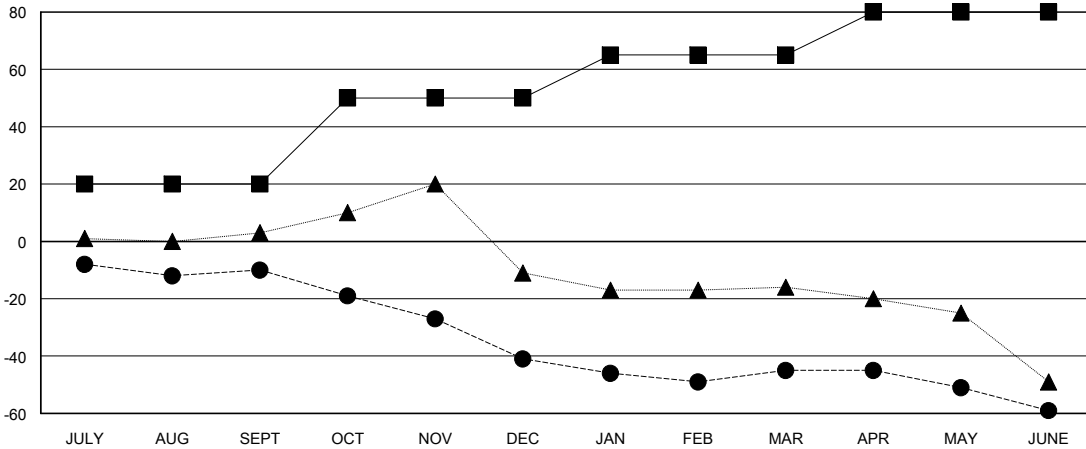
Members			
RESULTS FOR 2019-2020			
QUARTER	MEMBER GROWTH NET GOAL	MEMBER GROWTH ACTUAL	DROPPED MEMBERS ACTUAL (including transfers)
JULY/AUG/SEPT	20	26	32
OCT/NOV/DEC	30	14	45
JAN/FEB/MAR	15	19	20
APR/MAY/JUNE	15	3	17

GOALS AND ACTUAL NEW CLUBS CUMULATIVE



- - CURRENT YEAR GOALS FOR NEW CLUBS
- - CURRENT YEAR ACTUAL NEW CLUBS
- ▲ - LAST YEAR ACTUAL NEW CLUBS

GOALS AND ACTUAL MEMBERS CUMULATIVE



- - MEMBER GROWTH NET GOAL
- - MEMBER GROWTH ACTUAL
- ▲ - LAST YEAR MEMBERSHIP ACTUAL

DROPPED CLUBS: 0	23 CLUBS OF 48 ADDED 1 OR MORE NEW MEMBERS	GENDER DISTRIBUTION
		MALE 710 (69.40%)
		FEMALE 313 (30.60%)
DROPPED MEMBERS	CLICK HERE FOR CUMULATIVE MEMBERSHIP DATA	TOTAL FAMILY UNIT MEMBERS 225
DECEASED 17		FAMILY MEMBERS PAYING HALF DUES 113
CLUB CANCELLED 0		
OTHER 97		
TOTAL 114		